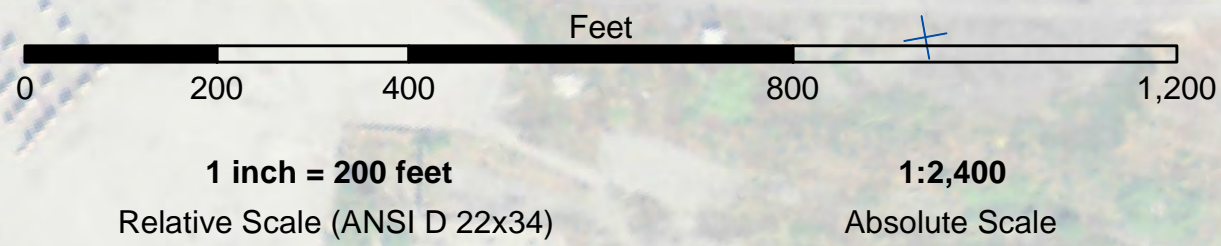


PRELIMINARY ISSUE
THIS PLAN ISSUED FOR
ADVANCE INFORMATION ONLY



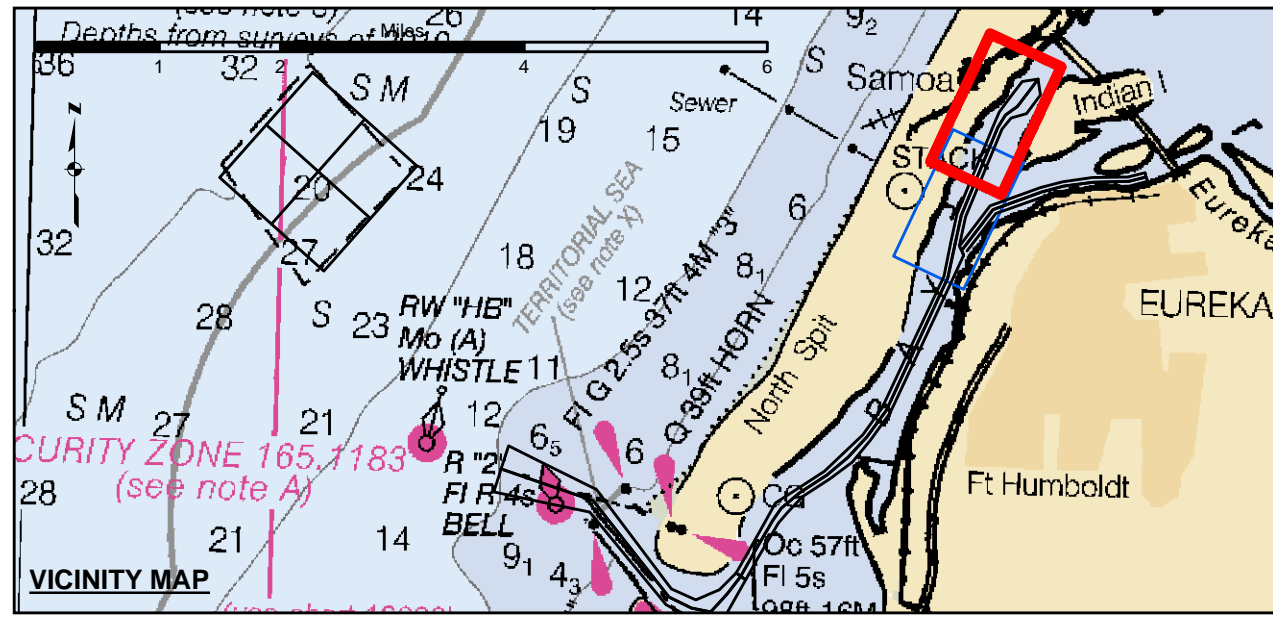
Angle Point	Easting	Northing
18	5956047.79	2183225.93
19	5957638.19	2187056.43
20	5957883.58	2189747.53
21	5958881.79	218978.43
23	5959681.79	2188378.43
24	5959081.79	2187578.43
25	5958421.69	2187381.23
26	5958007.99	2186903.83
27	5958425.99	2183093.63
C18	5958236.79	2183159.43
C19	5957823.09	2186979.43
C20	5958152.59	2187513.43
C21	5958681.79	2187878.43
C23	5959581.79	2189078.43

US Army Corps of Engineers
San Francisco District
1455 Market Street
San Francisco, CA 94103

DISCLAIMER
The United States Government furnishes this data for informational purposes only. It is not intended to be used for navigation. The user is responsible for the results of any application of this data for other than its intended purpose. The user is responsible for the results of any application of this data for other than its intended purpose. The user is responsible for the results of any application of this data for other than its intended purpose.

Prepared Under the Direction of	LT COLONEL C.E. DISTRICT ENGINEER	Chart Date:	Mar 15, 2018
Submitted by	Hydro Survey Team Leader	Designed by:	PDT
Recommended by	Chief, Hydro Survey Section	Plotted by:	PDT
Approved by	Chief, Construction Branch	Checked by:	PDT
		Drawn by:	PDT

CALIFORNIA
HUMBOLDT COUNTY
HUMBOLDT BAY
SAMOA CHANNEL
CONDITION SURVEY
08 MARCH 2018

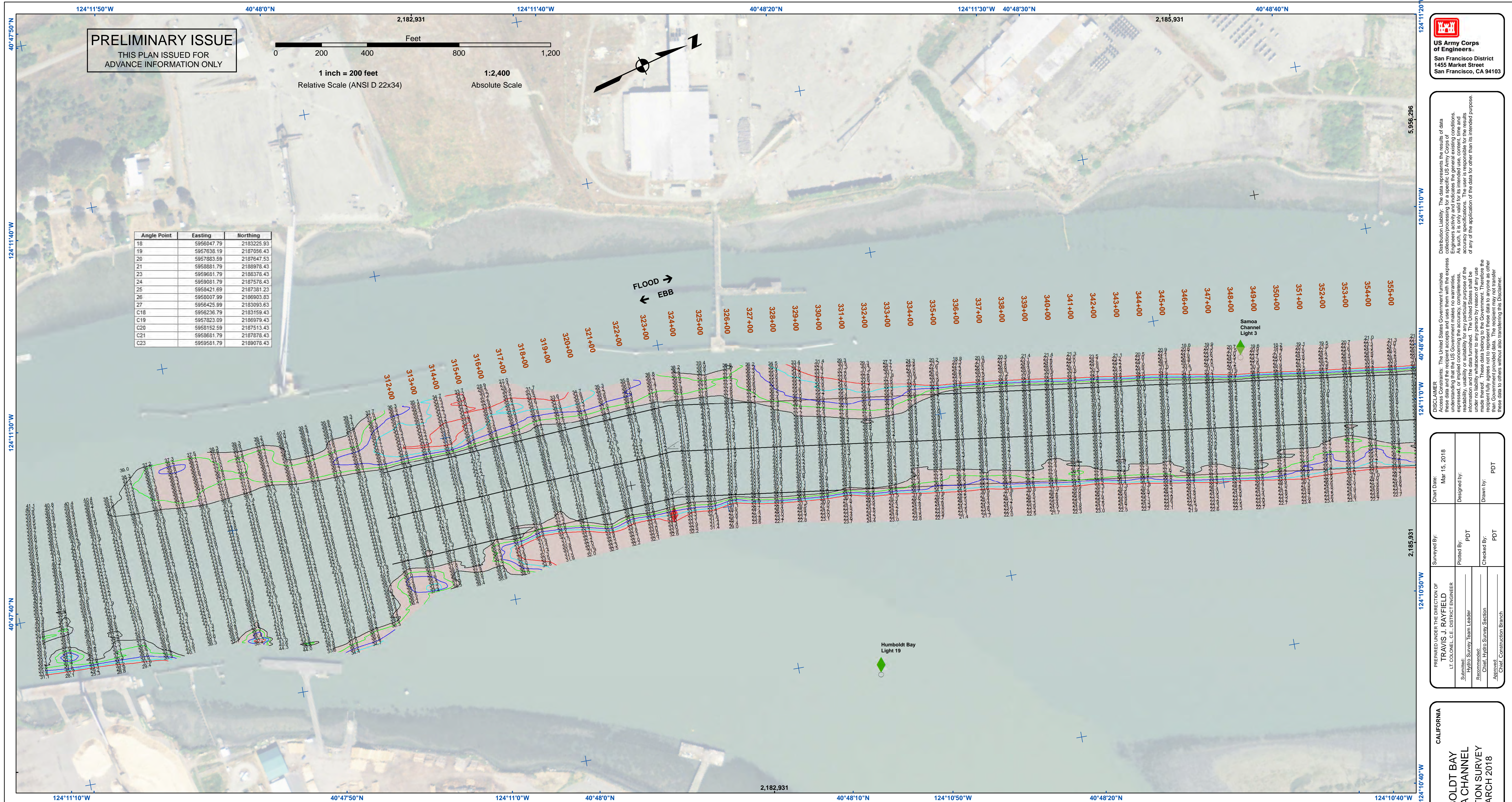


Federal Navigation Channel	Beacon, General	Contours
Shoaling Area	Obstruction Point	-38
Placement Area	Navigation Buoy	-37
Anchorage Area	Navigation Buoy	-36
Wreck Area	Shoalest Sounding*	-35
Submerged Wreck		-34
Angle Point		

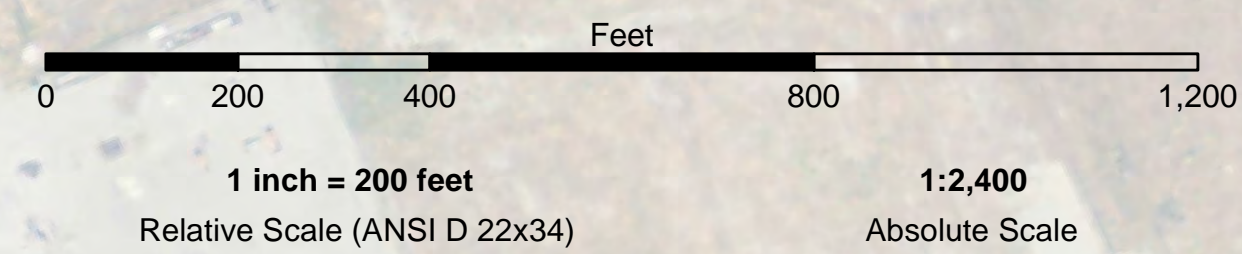
NOTES:
DRAWINGS NOT TO BE USED AS NAVIGATION. ONLY CHANNEL CONDITION AT DATE OF SURVEY. THE LOCATION OF ALL NAVIGATION AIDS ARE BASED ON INFORMATION PROVIDED BY THE U.S. COAST GUARD. BUOY LOCATION REPRESENT THE POSITION OF THE SINKER ONLY.
SURVEYED BY THE CORPS OF ENGINEERS.
SOUNDINGS WERE TAKEN BY FATHOMETER AND ARE SHOWN TO THE NEAREST TENTHS OF A FOOT.
SOUNDINGS ARE BASED ON THE DATUM OF MEAN LOWER LOW WATER AT THE LOCALITY.
PLANE GRID AND COORDINATES ARE BASED ON THE STATE OF CALIFORNIA COORDINATE SYSTEM, LAMBERT CONFORMAL PROJECTION, ZONE 18N 83, CALIFORNIA, AS DESCRIBED IN SPECIAL PUBLICATION NO. 235, PUBLISHED BY THE NATIONAL OCEAN SURVEY.

PROJECT DEPTHS ARE AS FOLLOWS:
BAR & ENTRANCE CHANNEL = 48 FEET
NORTH BAY, SAMOA TO MILE 5.0 & = 38 FEET
EUREKA CHANNEL, FIELDS LANDING CHANNEL & MILE 5.0 TO "N" STREET = 26 FEET
SOUNDINGS ARE BASED ON TIDE GAUGES REFERENCED TO U.S.C. & G.S. BENCH MARKS AS FOLLOWS:
EUREKA & SOMOA CHANNELS - B.M. NO. 4 (1906) ELEV. 33.61' M.L.L.W.
ENTRANCE & NORTH BAY CHANNELS - B.M. NO. 9 (1937) ELEV. 16.35' M.L.L.W.
FIELDS LANDING CHANNEL - B.M. NO. 5 (1925) ELEV. 8.52' M.L.L.W.

Sheet Reference Number
1 of 2



PRELIMINARY ISSUE
THIS PLAN ISSUED FOR
ADVANCE INFORMATION ONLY



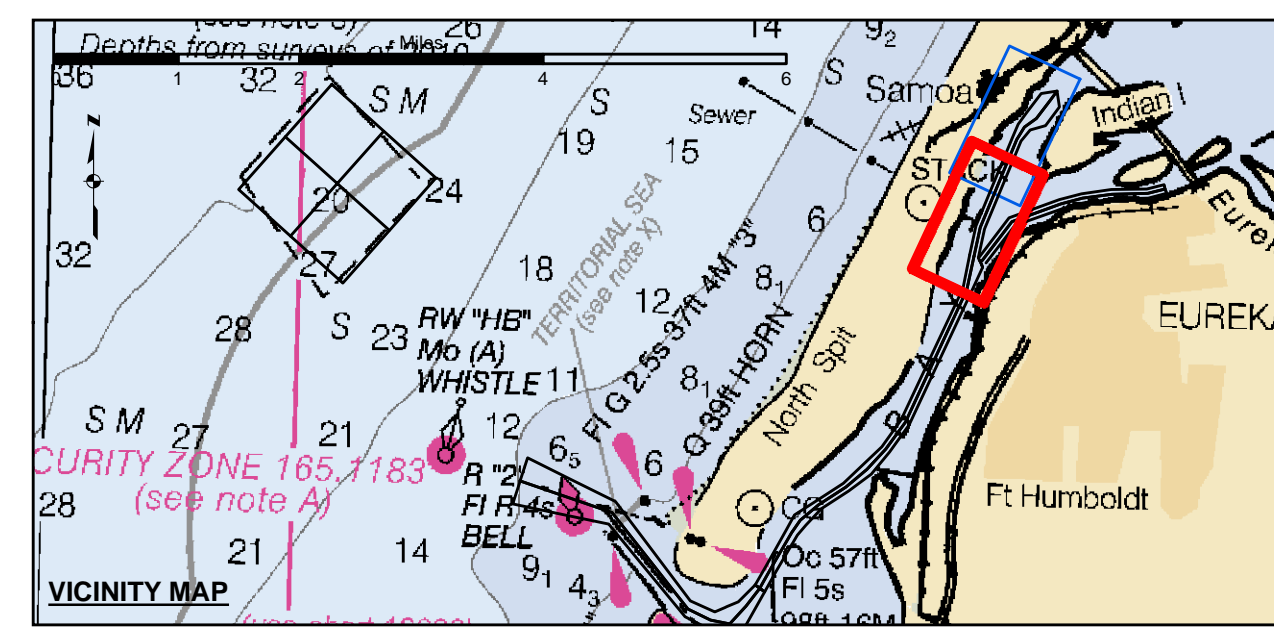
Angle Point	Easting	Northing
18	5956047.79	2183225.93
19	5957638.19	2187056.43
20	5957883.59	2187677.53
21	5958881.79	2188978.43
23	5959681.79	2188378.43
24	5959081.79	2187578.43
25	5958421.69	2187381.23
26	5958007.99	2186903.83
27	5956425.99	2183093.63
C18	5958236.79	2183159.43
C19	5957823.09	2186979.43
C20	5958152.59	2187513.43
C21	5958681.79	2187878.43
C23	5959581.79	2189078.43

US Army Corps of Engineers
San Francisco District
1455 Market Street
San Francisco, CA 94103

DISCLAIMER
The United States Government furnishes this information as a service to the public. It is not intended to be used for any purpose other than that for which it was prepared. The user is responsible for the results of any application of this information. The user is responsible for the results of any application of this information. The user is responsible for the results of any application of this information.

Prepared Under the Direction of:	LT COLONEL J. RAYFIELD
Submittal:	Hydro Survey, Team Leader
Recommendation:	Chief, Hydro Survey, Section
Approval:	Chief, Construction Branch
Surveyed By:	PDT
Plotted By:	PDT
Checked By:	PDT
Chart Date:	Mar 15, 2018
Designed by:	PDT
Drawn by:	PDT

CALIFORNIA
HUMBOLDT COUNTY
HUMBOLDT BAY
SAMOA CHANNEL
CONDITION SURVEY
08 MARCH 2018



	Federal Navigation Channel		Beacon, General	Contours	
	Shoaling Area		Obstruction Point		-38
	Placement Area		Navigation Buoy		-37
	Anchorage Area		Navigation Buoy		-36
	Wreck Area		Shoalest Sounding*		-35
	Submerged Wreck				-34
	Angle Point				

NOTES:
DRAWINGS NOT TO BE USED AS NAVIGATION. ONLY CHANNEL CONDITION AT DATE OF SURVEY. THE LOCATION OF ALL NAVIGATION AIDS ARE BASED ON INFORMATION PROVIDED BY THE U.S. COAST GUARD. BUOY LOCATION REPRESENT THE POSITION OF THE SINKER ONLY.
SURVEYED BY THE CORPS OF ENGINEERS.
SOUNDINGS WERE TAKEN BY FATHOMETER AND ARE SHOWN TO THE NEAREST TENTHS OF A FOOT.
SOUNDINGS ARE BASED ON THE DATUM OF MEAN LOWER LOW WATER AT THE LOCALITY.
PLANE GRID AND COORDINATES ARE BASED ON THE STATE OF CALIFORNIA COORDINATE SYSTEM, LAMBERT CONFORMAL PROJECTION, ZONE 1 NAD 83, CALIFORNIA, AS DESCRIBED IN SPECIAL PUBLICATION NO. 235, PUBLISHED BY THE NATIONAL OCEAN SURVEY.

PROJECT DEPTHS ARE AS FOLLOWS:
BAR & ENTRANCE CHANNEL = 48 FEET
NORTH BAY, SAMOA TO MILE 5.0 & = 38 FEET
EUREKA CHANNEL, FIELDS LANDING CHANNEL & MILE 5.0 TO "N" STREET = 26 FEET
SOUNDINGS ARE BASED ON TIDE GAUGES REFERENCED TO U.S.C. & G.S. BENCH MARKS AS FOLLOWS:
EUREKA & SAMOA CHANNELS - B.M. NO. 4 (1906) ELEV. 33.61' M.L.L.W.
ENTRANCE & NORTH BAY CHANNELS - B.M. NO. 9 (1937) ELEV. 16.35' M.L.L.W.
FIELDS LANDING CHANNEL - B.M. NO. 5 (1925) ELEV. 8.52' M.L.L.W.

Sheet Reference Number
2 of 2